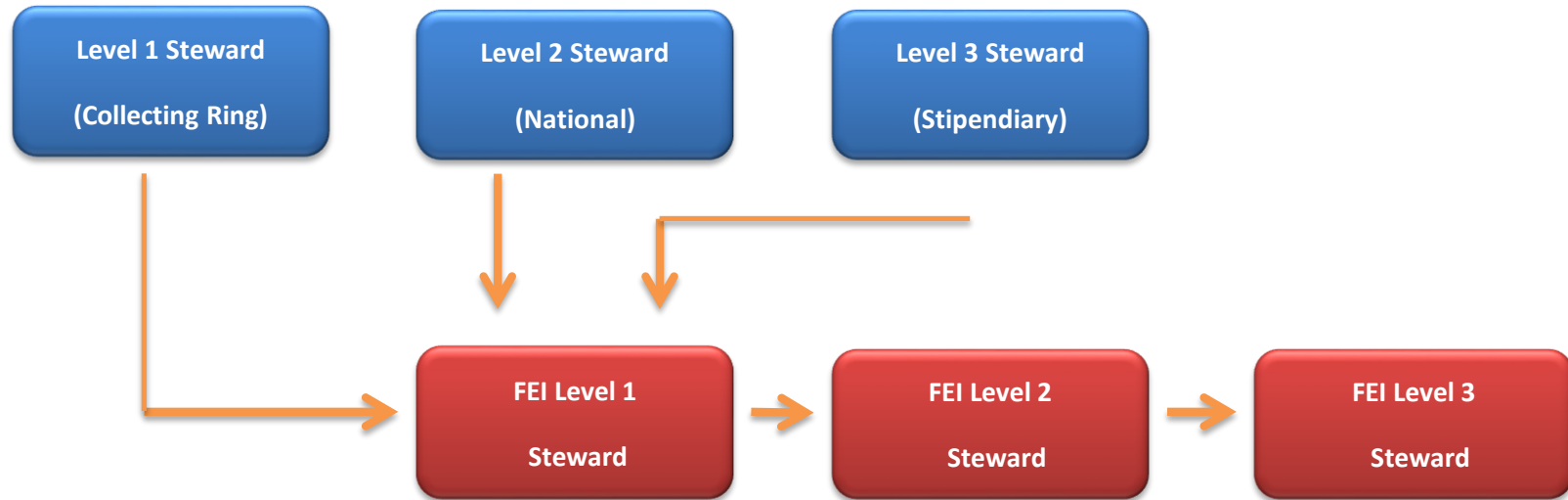


STEWARDS

TRAINING & DEVELOPMENT PATHWAY



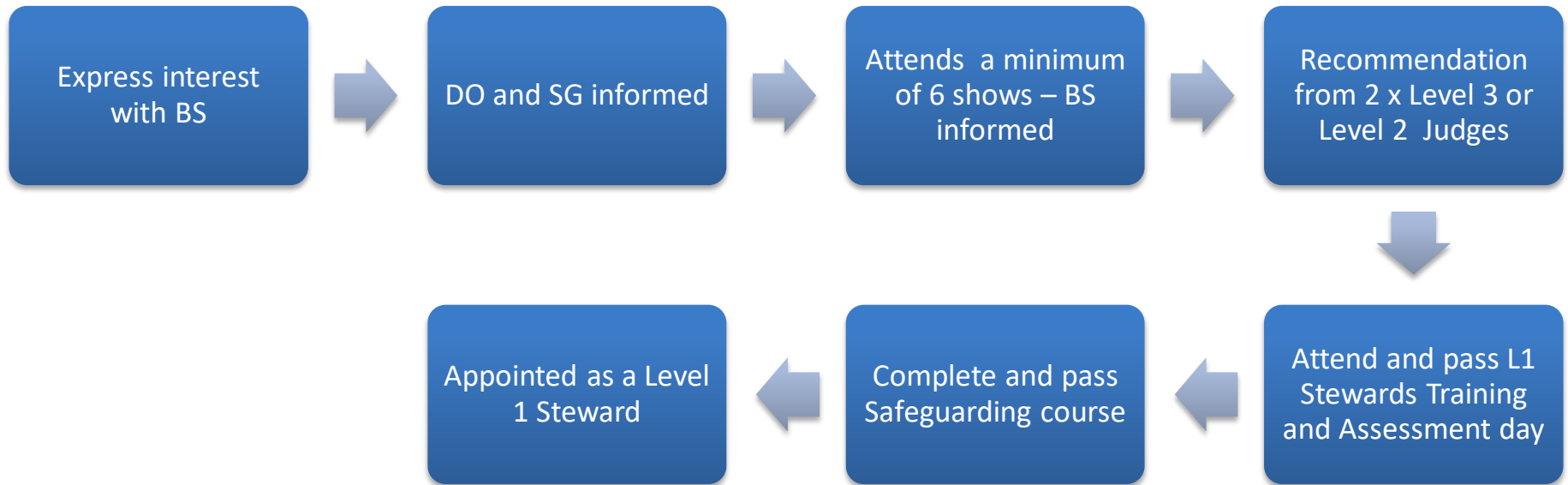
Stewards Progression Chart

Details of how to progress through the levels are detailed below, including the key criteria and competencies which need to be met for each progression.

Officials can progress onto the FEI ladder by applying to British Showjumping. Once endorsed by British Showjumping, applications will be then submitted to the FEI for assessment, approval & inclusion on the Stewards list.

Becoming a Level 1 Steward (Collecting Ring)

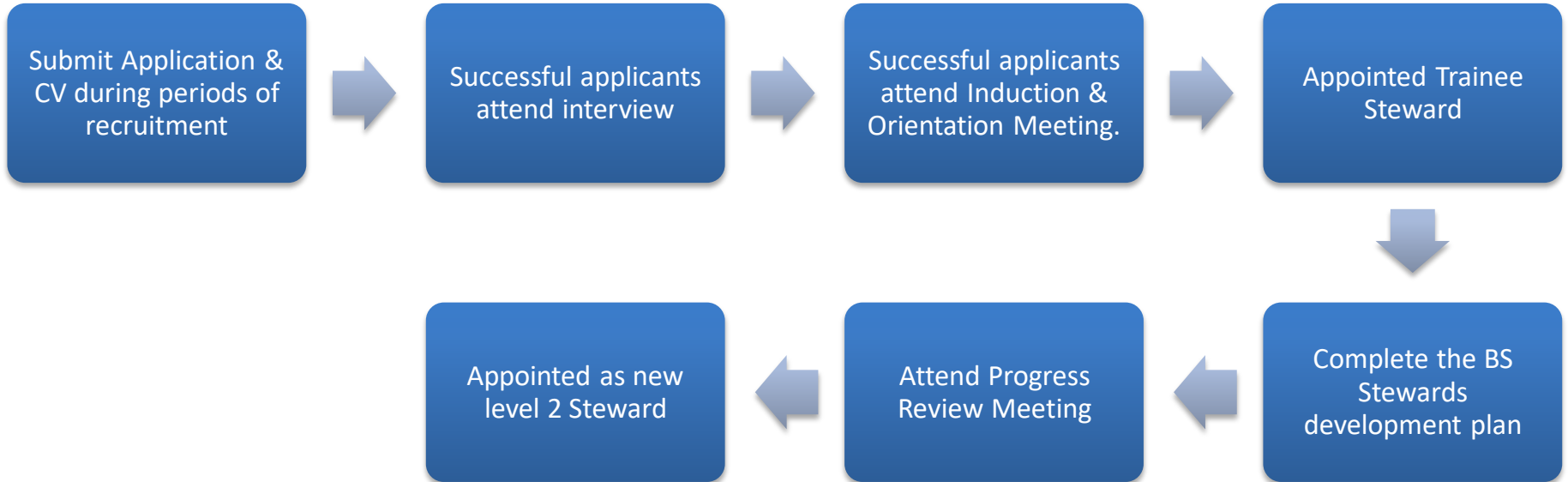
New Enquiry



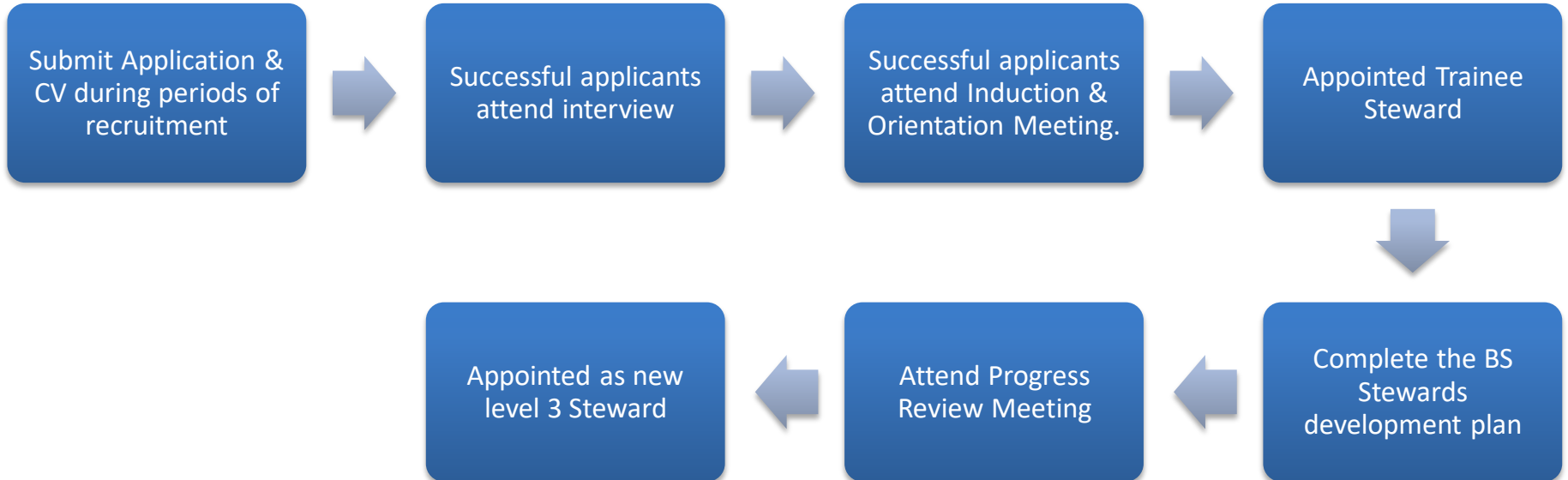
NOTES

BS = British Showjumping
DO = Development Officer
SG= Steward General

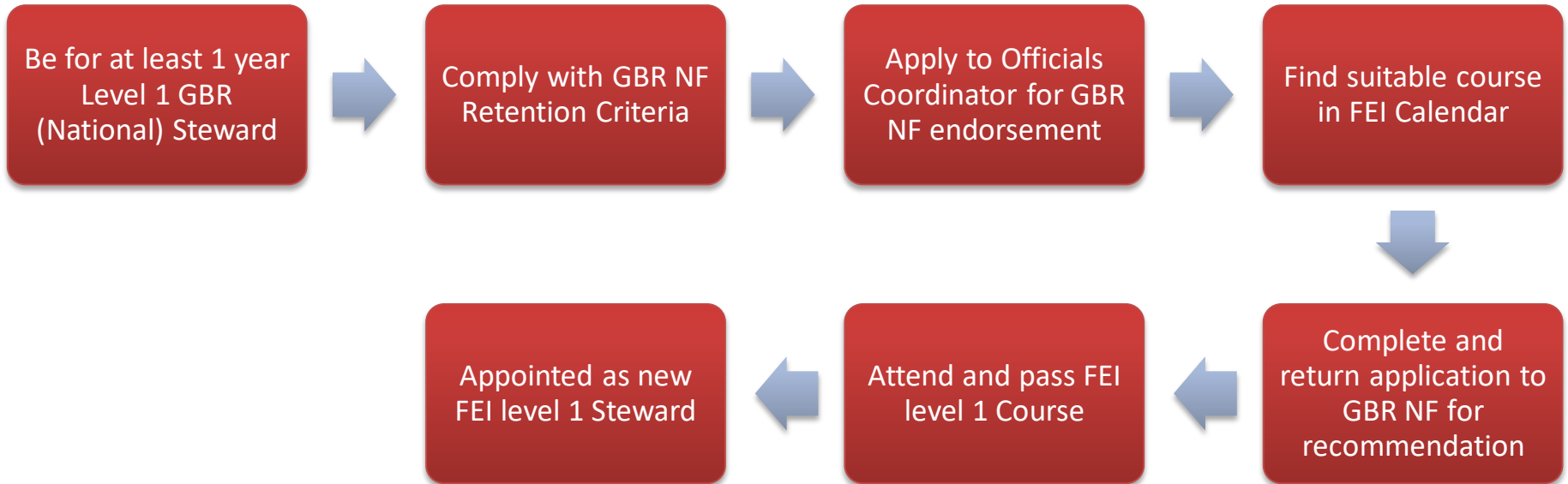
Becoming a Level 2 Steward (National)



Becoming a Level 3 Steward (Stipendiary)



Becoming a FEI Level 1 Steward



FEI Application & Upgrade policy

All FEI Officials Applications, including FEI Officials upgrades will need GBR NF recommendation as per the FEI pathway. GBR NF Recommendations will only be given to those candidates who are current National Officials, (in the relevant Official category), fully compliant with their retention criteria and whose work is known to the National Governing body so we are able to comment on and endorse appropriately.

RETENTION AND CONTINUING PROFESSIONAL DEVELOPMENT (CPD) NOTES

- Level 1 must attend an Officials Training Event every 2 years
- Level 2 & 3 Must attend the Annual Stewards CPD Day
- Levels 1 & 2 must complete a minimum of 6 British Showjumping show days a year, must demonstrate commitment to CPD
- Level 3 must complete a minimum of 10 British Showjumping show days a year, must demonstrate commitment to CPD
- All Levels Must hold a current certificate in the safeguarding of children and vulnerable persons.
- All levels must complete the minimum show days a year to be retained at current level, if not, they may be downgraded.